

Rat Cgref1 Antibody (C-term)
Affinity Purified Rabbit Polyclonal Antibody (Pab)
Catalog # AP20491b**Specification**

Rat Cgref1 Antibody (C-term) - Product Information

Application	WB, IHC-P,E
Primary Accession	P97586
Reactivity	Rat
Host	Rabbit
Clonality	Polyclonal
Isotype	Rabbit IgG
Antigen Region	220-248

Rat Cgref1 Antibody (C-term) - Additional Information**Gene ID** 245918**Other Names**

Cell growth regulator with EF hand domain protein 1, Cell growth regulatory gene 11 protein, Hydrophobestin, Cgref1, Cgr11

Target/Specificity

This RAT Cgref1 antibody is generated from rabbits immunized with a KLH conjugated synthetic peptide between 220-248 amino acids from the C-terminal region of rat Cgref1.

Dilution

WB~~1:1000

IHC-P~~1:25

E~~Use at an assay dependent concentration.

Format

Purified polyclonal antibody supplied in PBS with 0.09% (W/V) sodium azide. This antibody is purified through a protein A column, followed by peptide affinity purification.

Storage

Maintain refrigerated at 2-8°C for up to 2 weeks. For long term storage store at -20°C in small aliquots to prevent freeze-thaw cycles.

Precautions

Rat Cgref1 Antibody (C-term) is for research use only and not for use in diagnostic or therapeutic procedures.

Rat Cgref1 Antibody (C-term) - Protein Information**Name** Cgref1 {ECO:0000312|RGD:620801}**Synonyms** Cgr11

Function Mediates cell-cell adhesion in a calcium-dependent manner. Able to inhibit growth in several cell lines.

Cellular Location

Secreted.

Tissue Location

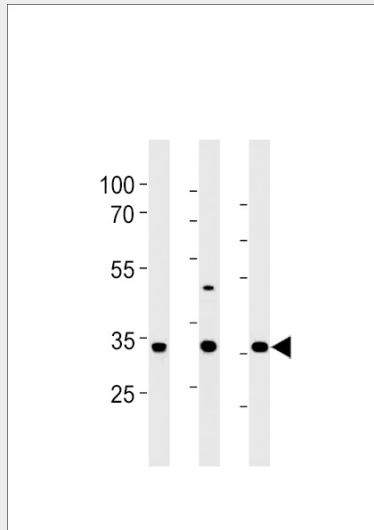
Expressed predominantly in whole brain and kidney, with limited expression in heart, lung, liver, and skeletal muscle and no expression in spleen and testis. Also expressed in pituitary gland, adrenal gland, digestive tract, and reproductive organs

Rat Cgref1 Antibody (C-term) - Protocols

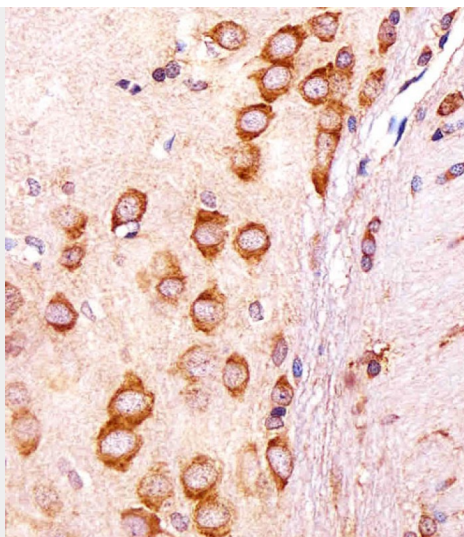
Provided below are standard protocols that you may find useful for product applications.

- [Western Blot](#)
- [Blocking Peptides](#)
- [Dot Blot](#)
- [Immunohistochemistry](#)
- [Immunofluorescence](#)
- [Immunoprecipitation](#)
- [Flow Cytometry](#)
- [Cell Culture](#)

Rat Cgref1 Antibody (C-term) - Images



Rat Cgref1 Antibody (C-term) (Cat. #AP20491b) western blot analysis in rat liver, stomach and testis tissue lysates (35ug/lane). This demonstrates the RAT Cgref1 antibody detected the rat Cgref1 protein (arrow).



Immunohistochemical analysis of paraffin-embedded rat brain section using rat Cgref1 Antibody (C-term) (Cat#AP20491B). AP20491B was diluted at 1:25 dilution. An undiluted biotinylated goat polyvalent antibody was used as the secondary, followed by DAB staining.

Rat Cgref1 Antibody (C-term) - Background

Mediates cell-cell adhesion in a calcium-dependent manner. Able to inhibit growth in several cell lines.

Rat Cgref1 Antibody (C-term) - References

Madden S.L., et al. Cancer Res. 56:5384-5390(1996).
Devnath S., et al. Eur. J. Cell Biol. 88:521-529(2009).